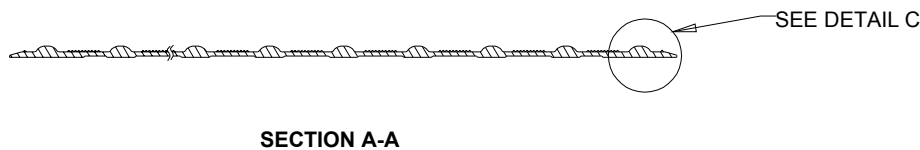
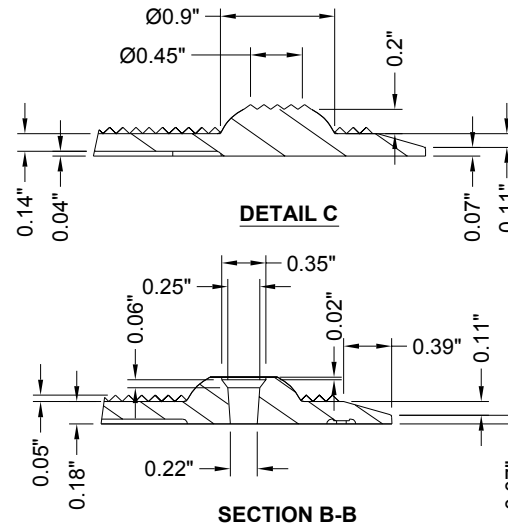
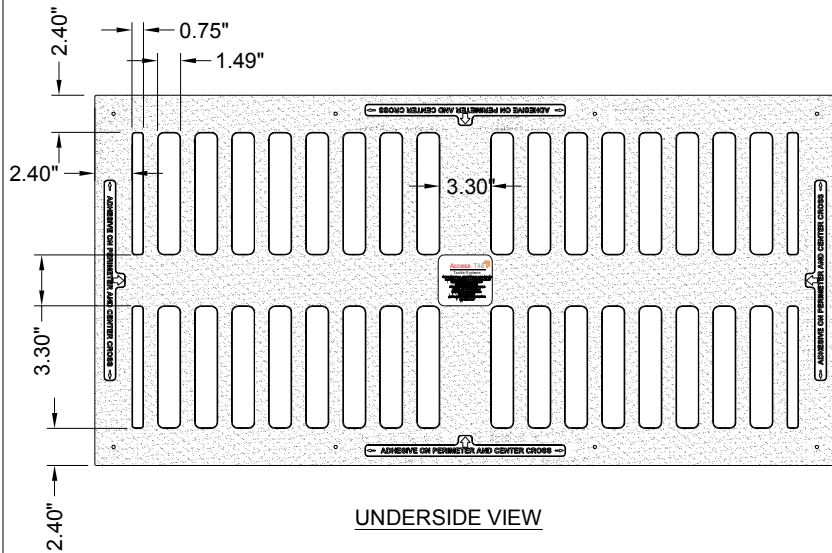
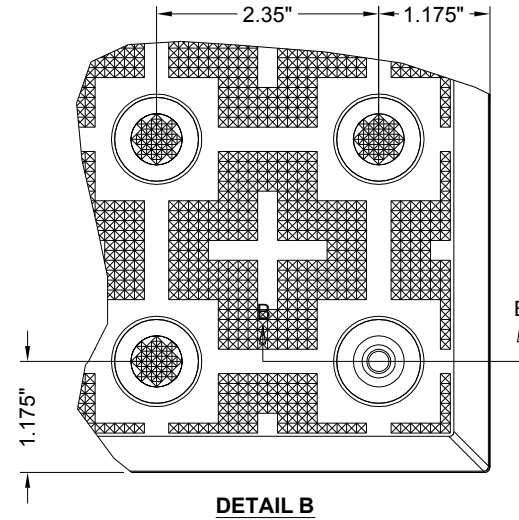
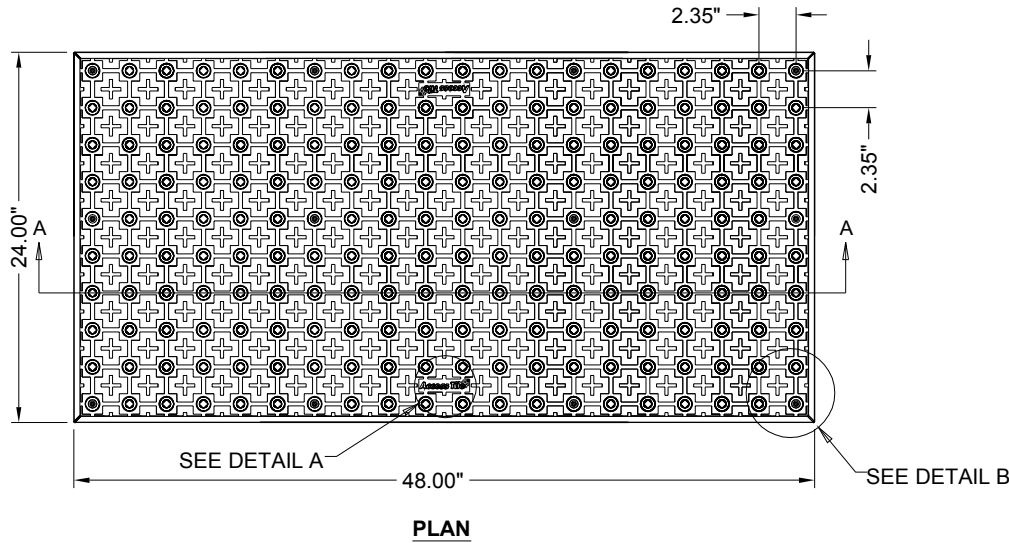


2'X4'

**SURFACE APPLIED
2.35" DOME SPACING**

www.AccessTile.com 888-679-4022



www.AccessTile.com
Access Products Inc

© Access Products Inc.
ACCESS, ACCESS TILE, ACCESS+ AND THE THREE AND TWO DIMENSIONAL DESIGNS ON THE TILE BETWEEN DOMES AND ON DOMES ARE TRADEMARKS OF ENGINEERED SYSTEMS INC.
PATENTS PENDING IN THE UNITED STATES, CANADA AND INTERNATIONALLY
MANUFACTURED AND DISTRIBUTED UNDER LICENSE BY
ACCESS WORLD PRODUCTS INCORPORATED
www.accessible.com
© KENNETH E. SZEKELY

MATERIAL LIST

ITEM	DESCRIPTION	PART NO.	QTY
1	ACCESS TILE	ACC-S-2X4	1
2	Tek™ ANCHOR	ACC-S-ANCH	11
3	TACTILE BOND AND SEAL	TBS-010	1 ea

NOTE: FASTENERS AND 1 TUBE OF TACTILE BOND AND SEAL ARE INCLUDED WITH TILE

REFERENCE DRAWINGS

DWG. NO.	DESCRIPTION

No.	DATE	REVISION	APPR.

SCALE
1"=1'-0" U.N.O.
FULL SIZE ONLY

DESIGNED: KES DATE: 10/09/2008

DRAWN: RWD DATE: 10/15/2008

CHECKED: KES

PROJECT MANAGER

TRADE: DETECTABLE WARNING SURFACE PART NO.: ACC-S-2X4

MATERIAL: POLYMER COMPOSITE

SUBJECT
ACCESS TILE®
TRUNCATED DOME, DETECTABLE WARNING TACTILE SURFACE

PROJECT
ACCESS TILE®
TRUNCATED DOME, DETECTABLE WARNING TACTILE SURFACE
2X4 SURFACE APPLIED
INLINE DOME TILE DRAWING.

DRAWING NO.: ACC-S-2X4 REV. NO.: Ø